

## What the QPP Resource Center™ can do for You

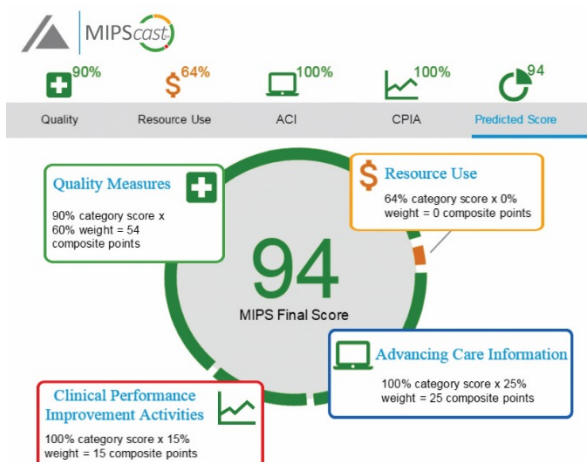
The Quality Payment Program (QPP) is the new Medicare initiative focused on measuring quality and improving healthcare delivery. If you provide Medicare services, the question is not if you will participate in the QPP, but how. Your practice will choose one of two tracks: the Merit-based Incentive Payment System (MIPS) or an Advanced Alternative Payment Model (APM).

*Unsure of what to do?* That's where we come in! We are the QPP Resource Center™ for the Midwest, a Centers for Medicare and Medicaid Services-funded collaboration among 10 key partners across Michigan, Ohio, Indiana, Illinois, Kentucky, Wisconsin, and Minnesota, focused on supporting providers in small practices, and rural or underserved areas. Our network of experienced technical assistance organizations provides free help to eligible clinicians as they navigate participation in the QPP.

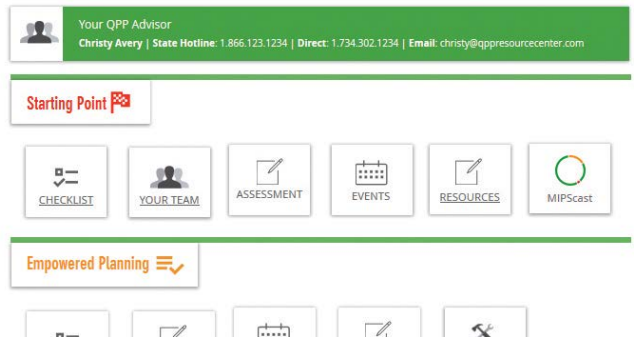
The QPP Resource Center web portal can be your trusted source for educational tools and resources to help create effective change within your practice. Our expert staff review all resources for accuracy and usability, and provide information about each resource to help you understand what it is, who it is designed for, and how to use it. Our straightforward, self-directed resources can help you to assess your current state and the need to participate in MIPS, or the potential impact of belonging to an APM. An easy-to-use, interactive web-app, MIPScast™, will help you predict your MIPS score, identify areas for improvement, and compare your practice to peers (available mid-2017).

Expert QPP Advisors are also available via live chat, phone calls, or emails to help you identify and effectively use the educational and quality improvement tools and resources available through the QPP Resource Center web portal:

[qppresourcecenter.com](http://qppresourcecenter.com).



### Your Resource Center



### Contact Us Today!

We are currently signing up providers. To learn more and sign up, email us and one of our QPP support staff will be happy to assist you: [healthcareadvisors@purdue.edu](mailto:healthcareadvisors@purdue.edu)

### Not sure if your practice is Small/Rural/Underserved?

Even if we can't assist you, we will work to connect you with another source of support based on your practice type and needs. We can refer you directly to:

- Quality Improvement Organizations (QIOs)
- Practice Transformation Networks (PTNs)
- Regional Extension Centers (RECs)
- One of the other 10 QPP Contractors (serving providers outside our 7-state region)